

Electropneumatically operated valves Series 3 and 4

Series 3: G1/8, 3/2-way and 5/2-way
 Series 4: G1/8, G1/4 and G1/2
 3/2, 5/2 and 5/3-way

The pneumatically operated, 3/2-way, 5/2-way and 5/3-way, Series 3 valves, G1/8, and Series 4 valves, G1/8, G1/4 and G1/2, have been designed with three different methods of return.

A pneumatic signal, mechanical spring or differential pneumatic return.

This is possible due to the type of design consisting of a balanced spool, which means that it can be used for a very wide range of applications.

The 3/2-way valves are normally closed in the rest position when the pressure is supplied at P, and are normally open when the pressure is supplied at R, the use of A remaining unchanged.

Moreover, the 5/2-way valves can be supplied via the ports R and S with two different pressures if a cylinder must be operated using a delivery pressure different from the return pressure.

On the valve series 3 and 4, G1/8 and G1/4, two additional holes permit assembly onto the manifold CNVL without the use of a banjo bolt.



SOLENOID VALVES AND PNEUMATIC VALVES

GENERAL DATA	
Construction	with spool (servocontrolled)
Valve group	3/2, 5/2, 5/3 way/pos.
Materials	aluminium body, stainless steel spool, NBR seals
Mounting	through-holes in valve body
Threaded ports	G1/8, G1/4, G1/2
Installation	in any position
Operating temperature	0 ÷ 80°C (with dry air at -20°C)
Lubricant	oil compatible with NBR (3° ÷ 10° E)

The company reserves the right to vary models and dimensions without notice. These products are designed for industrial applications and are not suitable for sale to the general public.

ul. A.Struga 10a; 70-777 Szczecin; tel.: +91 4640 641; fax: +91 4627 359
www.phu-nova.eu e-mail: nova@phu-nova.eu

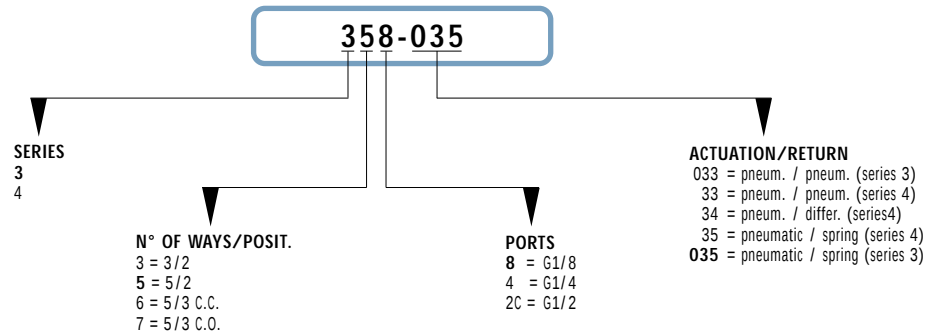


PNEUMATIC DATA

Operating pressure	P = 0 ÷ 10 bar		
Control pressure	min. press. (see valve description)		
Nominal pressure	6 bar		
Nominal flow	*Qn Series 3: G1/8 = 500 NI/min		
	Series 4: G1/8 = 650 NI/min	G1/4 = 1250 NI/min	G1/2 = 1900 NI/min
Nominal diameter	G1/8 = 5 mm	G1/4 = 7.5 mm	G1/2 = 12 mm
Fluid	filtered air		

* Qn = determined with supply pressure of 6 bar and with $p = 1$ bar.

CODING OF PNEUMATICALLY OPERATED VALVES

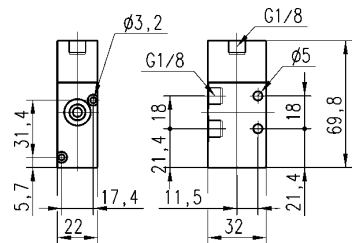
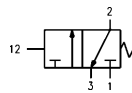


3/2-way valve, G1/8 port, monostable

Valve with pneumatic actuation and mechanical spring return.
Minimum control pressure: 3 bar.

Note: Please specify model 338 for single application or 338L for manifold CNVL use.

Mod.
338-035
338L-035

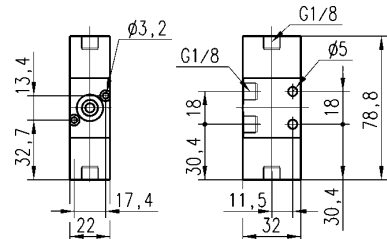
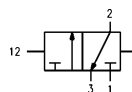


3/2-way valve, G1/8 port, bistable

Valve with pneumatic actuation and return.
Minimum control pressure: 2.5 bar.

Note: Please specify model 338 for single application or 338L for manifold CNVL use.

Mod.
338-033
338L-033

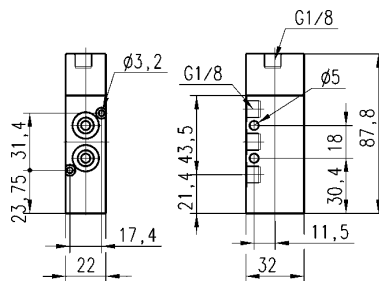




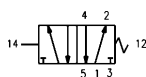
ul. A.Struga 10a; 70-777 Szczecin; tel.: +91 4640 641; fax: +91 4627 359
www.phu-nova.eu e-mail: nova@phu-nova.eu

5/2-way valve, G1/8 port, monostable

Valve with pneumatic actuation and mechanical spring return.
Minimum control pressure: 3 bar.

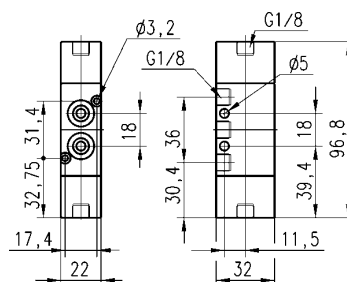


Mod.	358-035
------	---------

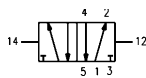


5/2-way valve, G1/8 port, bistable

Valve with pneumatic actuation and return.
Minimum control pressure: 2.5 bar.

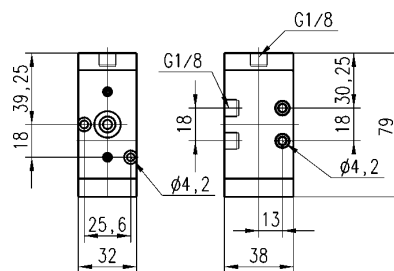


Mod.	358-033
------	---------

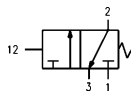


3/2-way valve, G1/8 port, monostable

Valve with pneumatic actuation and mechanical spring return.
Minimum control pressure: 2.5 bar.

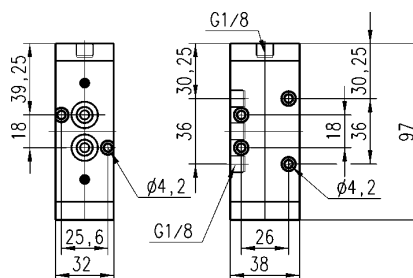


Mod.	438-35
------	--------

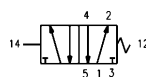


5/2-way valve, G1/8 port, monostable

Valve with pneumatic operation and mechanical spring return.
Minimum control pressure: 2.5 bar.



Mod.	458-35
------	--------



The company reserves the right to vary models and dimensions without notice. These products are designed for industrial applications and are not suitable for sale to the general public.



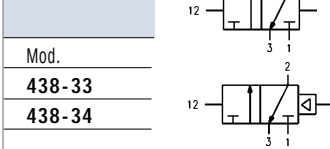
SOLENOID VALVES AND PNEUMATIC VALVES

ul. A.Struga 10a; 70-777 Szczecin; tel.: +91 4640 641; fax: +91 4627 359
www.phu-nova.eu e-mail: nova@phu-nova.eu

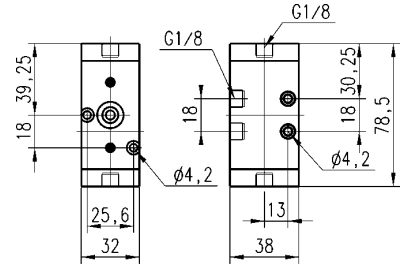


3/2-way valve, G1/8 port, bistable

Valve with pneumatic actuation and differential return.
Minimum control pressure: 2 bar.

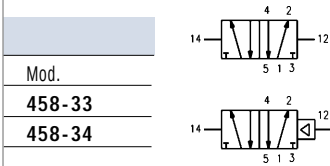


Mod.
438-33
438-34

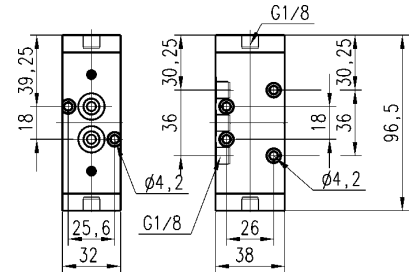


5/2-way valve, G1/8 port, bistable

Valve with pneumatic actuation and differential return.
Minimum control pressure: 2 bar.

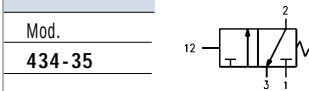


Mod.
458-33
458-34

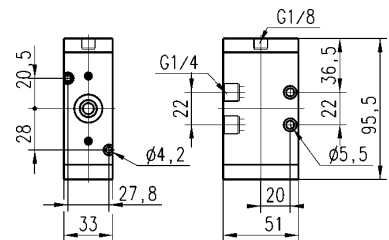


3/2-way valve, G1/4 port, monostable

Valve with pneumatic actuation and mechanical spring return.
Minimum control pressure: 2.5 bar.

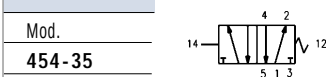


Mod.
434-35

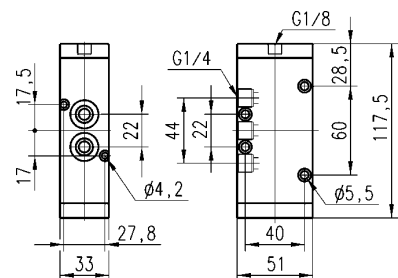


5/2-way valve, G1/4 port, monostable

Valve with pneumatic actuation and mechanical spring return.
Minimum control pressure: 2.5 bar.



Mod.
454-35



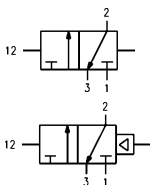


ul. A.Struga 10a; 70-777 Szczecin; tel.: +91 4640 641; fax: +91 4627 359
www.phu-nova.eu e-mail: nova@phu-nova.eu

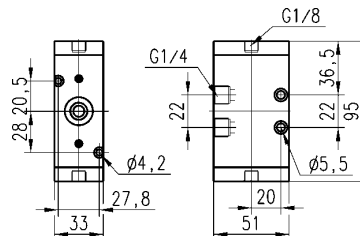
SOLENOID VALVES AND PNEUMATIC VALVES

3/2-way valve, G1/4 port, bistable

Valve with mechanical operation and mechanical spring return.
Minimum control pressure: 2 bar.

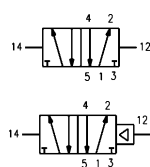


Mod.
434-33
434-34

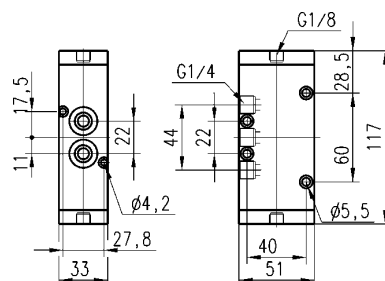


5/2-way valve, G1/4 port, bistable

Valve with pneumatic actuation and air return.
Minimum control pressure: 2 bar.

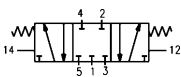


Mod.
454-33
454-34

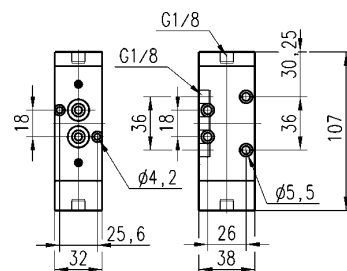


5/3-way closed-centre valve, G1/8 port, monostable, with central stable position

Valve with pneumatic actuation and central return by mechanical spring.
Minimum control pressure: 2.5 bar.

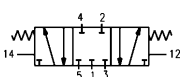


Mod.
468-33

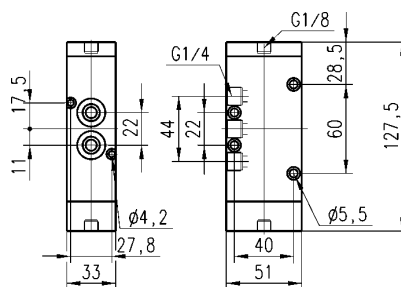


5/3-way closed-centre valve, G1/4 port, monostable, with central stable position

Valve with pneumatic actuation and central return by mechanical spring.
Minimum control pressure: 2.5 bar.



Mod.
464-33

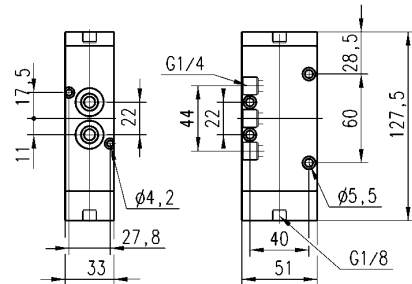


ul. A.Struga 10a; 70-777 Szczecin; tel.: +91 4640 641; fax: +91 4627 359
www.phu-nova.eu e-mail: nova@phu-nova.eu

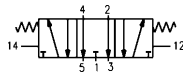


5/3-way open-centre valve, G1/4 port, monostable, with central stable position

Valve with pneumatic actuation and central return by mechanical spring.
Minimum control pressure: 2.5 bar.

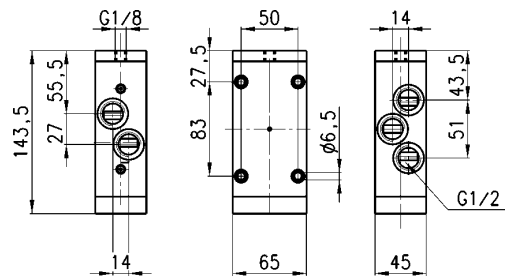


Mod.
474-33

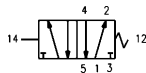


5/2-way valve, G1/2 port, monostable

Valve with pneumatic actuation and mechanical spring return.
Minimum control pressure: 2.5 bar.

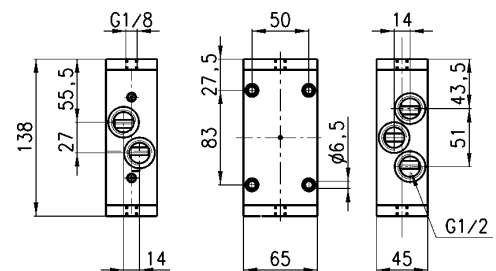


Mod.
452C-35

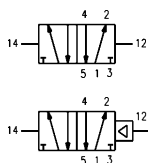


5/2-way valve, G1/2 port, bistable

Valve with pneumatic actuation and air return.
Minimum control pressure: 2 bar.



Mod.
452C-33
452C-34



SOLENOID VALVES AND PNEUMATIC VALVES